

EMC NETWORKER AND DEDUPLICATION

Accelerating next-generation backup

ESSENTIALS

- Centralized management for both Data Domain and Avamar
- Retain backups onsite longer with 10 to 30x average data reduction
- Network-efficient replication for tape-free disaster recovery
- 90 percent faster VMware backups
- Application integration includes: Microsoft Exchange, SharePoint, and SQL; Oracle; SAP; DB2; Sybase; Lotus; and Informix
- Centralized management—common administrative and recovery interfaces for deduplicated and standard backups
- Single catalog for all backups

INTEGRATED DEDUPLICATION FOR CENTRALIZED, AUTOMATED, AND ACCELERATED BACKUP AND RECOVERY

Exponential data growth, regulations, aggressive service level agreements, and shrinking backup windows—all of these factors are driving IT managers to consider new approaches to data protection. Data deduplication is the enabling technology for next-generation data protection solutions. By reducing the size of backup datasets by an average of 10 to 30x, backups can be retained on site longer for fast operational restores, and replicated offsite efficiently over existing network links for disaster recovery and multisite tape consolidation.

With the addition of deduplication technology, EMC® NetWorker® enables you to leverage both traditional and deduplicated backup in the same environment. NetWorker simplifies deployment and lets users choose the right solution for the right backup workload. It also reduces the complexity and risk of introducing new capabilities as your data protection requirements evolve.

NETWORKER AND DATA DOMAIN

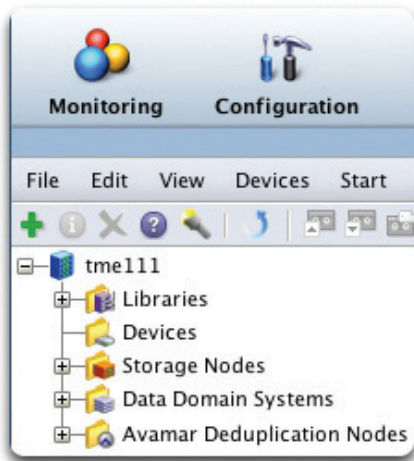
Deduplication can also be easily introduced in a NetWorker environment with EMC Data Domain® deduplication storage systems. Data Domain systems deduplicate data inline—during the backup process—so backup data lands on disk already deduplicated, requiring a fraction of the disk space of the original dataset. Backup data can be retained on site longer for fast, reliable restores from disk. Backup data can then be replicated offsite faster with minimal bandwidth for safe, tape-free disaster recovery.

NetWorker integrates with EMC Data Domain Boost—a software option that extends the capabilities of Data Domain solutions—to significantly increase performance and simplify management. With DD Boost parts of the deduplication process are distributed to the NetWorker storage node or application clients, enabling each to send only unique data segments to a Data Domain system. This increases the aggregate throughput by up to 100 percent, reduces the amount of data transferred over the network, and decreases CPU utilization on the NetWorker storage. The improved efficiency provides the ability to drive more backups from a single backup server.

With DD Boost, NetWorker can control the replication of data between multiple Data Domain systems and provide backup administrators with a single point of management for tracking all backups and duplicate copies. WAN-efficient Data Domain replication eliminates the need for tape-based backup and recovery for disaster recovery.

Management of Data Domain systems, from configuration to day-to-day operations, is greatly simplified with NetWorker:

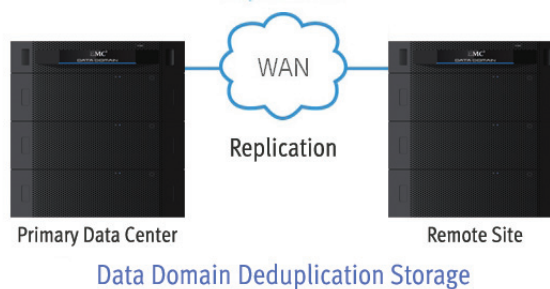
- Wizard-based discovery and configuration streamlines the setup of Data Domain systems
- Customizable SNMP monitoring captures Data Domain alerts and messages
- Replication monitoring displays Data Domain replication status and statistics
- Reporting reflects Data Domain capacity, utilization, and deduplication efficiency



Unified management of Data Domain and Avamar



Data Domain Boost for Server/Storage Node



The combination of NetWorker and Data Domain allows for centralized, automated, and accelerated data protection across your enterprise.

NETWORKER AND AVAMAR

NetWorker enables users to take advantage of the benefits of EMC Avamar® with a single, integrated client and a single software footprint that delivers the flexibility for users to easily choose deduplicated or traditional backup—or both. In existing NetWorker environments, upgrading protected hosts to the new integrated client is an easy and automated task using NetWorker's software distribution feature.

NetWorker offers flexibility in deployment of Avamar within the backup and recovery environment. There are two physical deployment options: Avamar Data Store, a complete pre-packaged solution that integrates Avamar software with EMC-certified hardware for streamlined deployment; and Avamar software that can be deployed on a range of certified, industry-standard servers. For environments using VMware® virtual infrastructure, the Avamar Virtual Edition delivers Avamar software deployed as a virtual appliance. Once installed, Avamar is managed as a resource in the NetWorker environment and all backup operations are handled through NetWorker.

VIRTUAL SERVER BACKUP

Virtualization increases server utilization rates and as a result, traditional backup operations contend for resources and can impact server performance. NetWorker with Avamar deduplication reduces the impact of backup operations on virtual hosts and enables even greater consolidation and value from virtualization.



Join the NetWorker Online community to meet fellow users and share best practices. www.emc.com/networkeronline

REMOTE OFFICE/BRANCH OFFICE

Data located in remote or branch offices is often inadequately protected due to a lack of local IT staff and limited resources. NetWorker with Avamar deduplication reduces the amount of daily backup data that must be sent and stored. For smaller remote offices, NetWorker clients can be deployed on protected systems, with no additional remote hardware required. This allows data to be backed up directly over existing WAN connections to the data center. For larger remote offices, data can be backed up to a local Avamar Data Store server or EMC-certified server and then replicated back to the data center or another remote site.

UNIFIED CONTROL AND MANAGEMENT

By providing a common management interface and unified backup and recovery workflows, NetWorker with Avamar and Data Domain deduplication helps customers achieve new levels of efficiency without adding administrative complexity. Existing NetWorker customers can enjoy the benefits of deduplication without the complexity of adding another backup user interface and workflow. Integrated software and hardware deduplication solutions from EMC deliver unmatched reliability and efficiency. With NetWorker, users can easily and safely evolve from traditional to next-generation data protection.

CONTACT US

To learn more about how EMC products, services, and solutions can help solve your business and IT challenges, contact your local representative or authorized reseller—or visit us at www.EMC.com.

EMC², EMC, Avamar, Data Domain, NetWorker, and the EMC logo are registered trademarks or trademarks of EMC Corporation in the United States and other countries. VMware is a registered trademark of VMware, Inc. in the United States and/or other jurisdictions. All other trademarks used herein are the property of their respective owners. © Copyright 2011 EMC Corporation. All rights reserved. Published in the USA. Data Sheet 07/11 H3979.4

EMC Corporation
Hopkinton, Massachusetts 01748-9103
1-508-435-1000
In North America 1-866-464-7381
www.EMC.com

EMC Backup Recovery Systems
Santa Clara, California
95054
1-408-980-4800
In North America 1-866-933-3873

EMC²
®